

# The *Women* for FLORIDA STATE UNIVERSITY

Winter 2016



## CELEBRATING WOMEN'S ATHLETICS: CHAMPIONS AUCTION



Named "Champions Auction" to reflect the University's champion status after winning the 2013-2014 National Championship, this auction, which takes place annually in the fall, consists of athletic memorabilia donated and collected by volunteers. The FSU Women's Athletics Department holds the auction, and the money raised goes directly to the

coaches clubs for each sport. From there, it is directed to the area of greatest need, including ones that may not be funded otherwise.

The event was implemented by Becky Spetman. Today, Vanessa Fuchs, the current senior Women's Athletics administrator, continues the event. Fuchs is extremely passionate about Women's Athletics; she placed the winning bid on the pattern for the Women's Athletics stained glass window depicting the Lady Seminoles logo, which was fabricated by Master Craftsman Studio and installed in the FSU Heritage Museum in Dodd Hall.

The Champions Auction has grown significantly over the past eight years. When the Champions Auction first began in 2009, the event raised around \$45,000. Today, its growing success has enabled organizers to set the goal at \$70,000. The auction has evolved into a weekend-long Women's Athletics celebration with Champions Beyond the Game—a brunch originated by Dr. Jan Wells and Dr. Billie Jones that recognizes Women's Athletics donors—

and the Femina Perfecta award ceremony, an event in which each team votes for the teammate who they feel is the most well-rounded and best exemplifies FSU's vires, artes, mores motto. Together, these events bring to campus distinguished alumni whose careers have been shaped by their involvement in women's athletics, providing a great networking opportunity to current students.

Although the Champions Auction is an event that was implemented to raise money for women's athletics, this event is an important avenue to provide current students—and FSU women as a whole—great opportunities to network, celebrate and support one another. ✨

—Ellen Holbert

*Ellen graduated from FSU with a double major in environmental studies and studio art. She became involved with W4FSU through Sarah Coakley, who served as her mentor at Master Craftsman Studio.*

### May 2005:

Women and Philanthropy Seminar, hosted by Dean Penny Ralston with author Sondra Shaw Hardy, marked the first time FSU recognized how women shape philanthropy

### Fall 2008:

First Lady Ginger Wetherall hosts organizational meeting of nascent Women for Florida State University group



**August 2010:** President Eric Barron and Mrs. Molly Barron establish the Women for FSU endowment



**January 2012:** Encore event at The Ringling Museum of Art

W4FSU



**July 2007:** Joyce Beery Miles joins FSU Foundation Board of Trustees, forges idea of a women's philanthropic organization



**March 2010:** Inaugural Backstage Pass held on campus, attendees danced with world-renowned ballerina and FSU Professor Suzanne Farrell, Nancy Turner receives the inaugural Gift of Wisdom Award

### March 2011:

Second Backstage Pass, attendees created fused glass pendants at the Master Craftsman Studio, Penny Ralston receives Gift of Wisdom Award



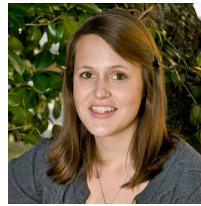
Cassandra Rayne Gross

As we emerge from a season of holiday rituals centered on family and love, we set our sights on our aspirations—both individually and as an organization. W4FSU leadership has spent the fall centering ourselves on our mission and setting specific objectives for our upcoming term. As members, you should be the first to know that we've chosen to focus on two critical areas. First, we wish to refine and enhance our concept of membership. Second, we strive to design meaningful giving opportunities that reinforce and reflect our commitment to our mission.

We will be hard at work determining how to meet these goals in the coming months. I invite each of you to consider what these objectives mean to you. If you're not sure, think about what you would like the answer to be and how can you help us make it a reality. I hope you'll share your insight with me. ✨

Fondly,  
Cassandra Rayne Gross  
Chair, Executive Committee

## DARING TO BE GREAT: FULLBRIGHT FELLOWS



Among the latest group of Fulbright U.S. Student Program recipients from Florida State University, eight out of 10 are women. The program awards grants for college seniors, graduate students and recent alumni to study, conduct research and/or teach English abroad for one year.

Seven of the eight female Fulbright Fellows will be teaching at various educational levels, from primary and secondary schools to universities. The Fellows will work in a number of different countries, such as Turkey, Brazil and Malaysia. The teaching Fellows are Debbie Alfred of Orlando, Fla.; Paige Dabney of Baker, Fla.; Caroline Echeverri of Copper City, Fla.; Kelly Hill and Jesse Smith-Appelson of Gainesville, Fla.; Caroline Miranda of Hallandale, Fla.; and Laura O'Connor of Jupiter, Fla. These Fulbright scholars

will help teach the English language while serving as cultural ambassadors for our country and for Florida State.

Recipient Jacqueline Rojas of Ocala, Fla. will conduct research in Portugal, focusing on factors that limit development in emerging countries. Also receiving Fulbright Fellowships for research are Carson Bay of Olympia, Wash., and David Skelton of Oklahoma City, Okla.

FSU's continued success in placing students in the Fulbright program supports the University's efforts of becoming a Top 25 institution. These Fulbright women and men represent FSU's finest students and global citizens. W4FSU congratulates these outstanding students on this prestigious honor. ✨

—Alicia Crew

**March 2012:**  
Third Annual  
Backstage Pass,  
Stella Cottrell  
receives the Gift of  
Wisdom Award



**March 2013:**  
Fourth Annual Backstage Pass,  
Kitty Hoffman receives the Gift of  
Wisdom Award

**March 2014:**  
Fifth Annual  
Backstage Pass,  
Tena Pate receives  
the Gift of Wisdom  
Award

**February 2012:**  
Jane and George  
Morgan establish  
an endowment for  
Women for FSU's  
operating expenses



**November 2012:** Encore event at  
FSU Panama City campus

**October 2013:**  
Inaugural Women's  
Leadership  
Institute held in  
partnership with  
the Center for  
Leadership and  
Social Change

**October 2014:**  
Second Annual  
Women's Leadership  
Institute, attendees  
learn about the rich  
history of women  
and leadership  
at FSU through  
presentations from  
Heritage Protocol and  
Special Collections  
and Archives



# CONVERSATIONS IN PHILANTHROPY



As women, we strive to live by our values. We desire to make the world a better place, and we want to invest our time, talents and resources where we believe we can make a difference. We want to involve ourselves where there is the greatest need and where we have a personal passion. We can be most effective when we work from a plan.

Your personal philanthropy plan will be most successful if it is approached strategically, both in how it's funded and in how those funds are invested in worthy causes. In other words, if you want to help make sure that your *desire* to give becomes a *reality*, put philanthropy in your budget.

Your philanthropy budget can include an annual gift to FSU, which is made particularly easy by participating in FSU's Great Give every spring. Mark your calendars for FSU's Great Give on March 30–31, 2017.

Hopefully your philanthropy budget will also have a long-range component—whether you choose to gift your estate or a gift that can be given over several years to your place of passion at FSU. W4FSU can help you connect to FSU Foundation professionals who can help match your time, talent and resources to your passion for the University.

To accomplish your philanthropic goals, put your plan in place and include FSU. Private philanthropy is a key component that will help FSU reach the Top 25 of public universities in *U.S. News & World Report's* rankings. ✨

—Janet Stoner



## WOMEN FOR FSU EXECUTIVE COMMITTEE

Lynn Bertram	Alicia Crew	Julie Granger Kritz	Pat Ramsey
Sarah Coakley	Cassandra Rayne Gross	Annie McFarland	Kathy Stahl
Stella Cottrell	Susan Hoerbelt	Sherrill Ragans	Marilyn Spores



**March 2015:** Sixth Annual Backstage Pass, attendees perform CPR in the College of Nursing Simulation Lab. **Sharon Lechter** receives the Gift of Wisdom Award



**October 2015:** Third Annual Women's Leadership Institute. Keynote speaker Sophia Danvers—global manager with Cisco and former FSU student-athlete—advises the audience to bring their whole selves to the job



**May 2016:** Inaugural Women of Distinction Award in NYC, in partnership with the FSU Alumni Association and Seminole Club of New York City



**July 2015:** Atlanta outreach event at the High Museum



**March 2016:** Seventh Annual Backstage Pass, **Joyce Beery Miles** receives the Gift of Wisdom Award



**October 2016:** Fourth Annual Women's Leadership Institute

The *Women* for  
FLORIDA STATE UNIVERSITY

FLORIDA STATE UNIVERSITY FOUNDATION  
2010 LEVY AVE., BLDG. B, STE. 300  
TALLAHASSEE, FL 32310

---

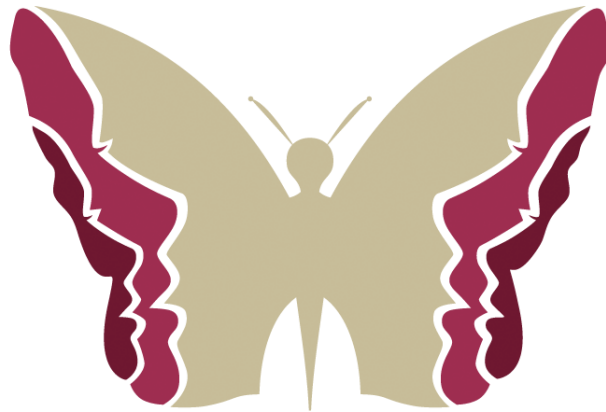
## WOMEN IN ENGINEERING: INVENT, AMAZE, INSPIRE

Who runs the world? Girls! Or better yet, highly intelligent, talented, driven and empowering women who are breaking down barriers and are making their presence known in the engineering world.

Across the country, countless engineering programs are looking for ways to diversify their student population and increase their recruitment of women. At the FAMU-FSU College of Engineering, not only are we meeting this objective, we are exceeding it. Nearly 25 percent of our undergraduate population are women—which is above the national average of just 20 percent.

Recognizing our opportunity to truly become an icon among engineering schools that promote women in engineering, the **Women in Engineering: Invent, Amaze, Inspire** campaign was born. Contributions to the WIE campaign will support scholarships, programming and access to resources for engineering students.

Results of this campaign will include: attracting and retaining the best students, creating a sense of community through active engagement in the Society of Women Engineers student chapter, and reinforcing the college's commitment to growing the population of female engineers.



### WOMEN IN ENGINEERING Invent • Amaze • Inspire

By joining the WIE campaign, you are helping to invent opportunities for students to excel at the college, which allows them to inspire the next generation of female engineers.

Whether you are an alumna of the College of Engineering or a friend who believes in what we can accomplish through our WIE campaign, I

invite you to get involved and learn more by visiting [eng.fsu.edu/wie](http://eng.fsu.edu/wie) or contacting Sarishni P. Patel at [spatel@foundation.fsu.edu](mailto:spatel@foundation.fsu.edu) or (850) 410-6570. ✉

—Sarishni P. Patel, director of development at the  
FAMU-FSU College of Engineering

---

TO LEARN MORE, VISIT [W4FSU.ORG](http://W4FSU.ORG)